



Certificate of Analysis

QA SAMPLE - INFORMATIONAL ONLY

1 of 3

ICAL ID: 20220216-045
 Sample: CA220216-018-055
 CBD Broad Spectrum Dropper, 500mg, Mint, w/
 MCT Oil, 30ml - Synephrine
 Strain: CBD Broad Spectrum Dropper, 500mg,
 Mint, w/ MCT Oil, 30ml - Synephrine
 Category: Ingestible

New Phase Blends, LLC
 Lic. #
 None
 West Palm Beach, FL 33401
 New Phase Blends, LLC
 Lic. #
 New Phase Blends, LLC West Palm Beach, FL

Batch#: 10F22
 Batch Size Collected:
 Total Batch Size:
 Collected: 02/21/2022; Received: 02/21/2022
 Completed: 02/21/2022

Moisture NT Water Activity NT	Δ9-THC ND	CBD 598.16 mg/unit	Total Cannabinoids 639.27 mg/unit	Total Terpenes NT
--	--------------	-----------------------	--------------------------------------	----------------------

Summary	SOP Used	Date Tested	Complete
Batch	POT-PREP-004	02/17/2022	Complete
Cannabinoids			



Scan to see results

Cannabinoid Profile

1 Unit = bottle, 30.04 g.

Analyte	LOQ (mg/g)	LOD (mg/g)	%	mg/g	mg/unit	Analyte	LOQ (mg/g)	LOD (mg/g)	%	mg/g	mg/unit
THCa	0.0368	0.0123	ND	ND	ND	CBDV	0.0368	0.0049	0.019	0.19	5.59
Δ9-THC	0.0368	0.0053	ND	ND	ND	CBN	0.0368	0.0074	0.045	0.45	13.40
Δ8-THC	0.0368	0.0055	ND	ND	ND	CBGa	0.0534	0.0178	ND	ND	ND
THCV	0.0368	0.0048	ND	ND	ND	CBG	0.0368	0.0061	0.012	0.12	3.48
CBDa	0.0368	0.0059	ND	ND	ND	CBC	0.0444	0.0148	0.062	0.62	18.63
CBD	0.0368	0.0050	1.991	19.91	598.16	Total THC			ND	ND	ND
						Total CBD			1.99	19.91	598.16
						Total			2.13	21.28	639.27

Total THC=THCa * 0.877 + Δ9-THC; Total CBD = CBDa * 0.877 + CBD. LOD= Limit of Detection, LOQ= Limit of Quantitation, ND= Not Detected, NR= Not Reported. Potency is reported on a dry weight basis. Instrumentation and analysis SOPs used: Cannabinoids:UHPLC-DAD(POT-INST-005),Moisture:Moisture Analyzer(MOISTURE-001),Water Activity:Water Activity Meter(WA-INST-002), Foreign Material:Microscope(FOREIGN-001). Density measured at 19-24 °C, Water Activity measured at 0-90% RH. All QA submitted by the client, All CA State Compliance sampled using SAMPL-SOP-001.

Terpene Profile

Analyte	LOQ (mg/g)	LOD (mg/g)	%	mg/g	Analyte	LOQ (mg/g)	LOD (mg/g)	%	mg/g
---------	------------	------------	---	------	---------	------------	------------	---	------

NR= Not Reported (no analysis was performed), ND= Not Detected (the concentration is less than the Limit of Detection (LOD)). Analytical instrumentation used: HS-GC-MS; samples analyzed according to SOP TERP-INST-003.



Infinite Chemical Analysis Labs
 8380 Miramar Mall #102
 San Diego, CA
 (858) 623-2740
 www.infiniteCAL.com
 Lic# C8-0000019-LIC

Josh M Swider

Josh Swider
 Lab Director, Managing Partner
 02/21/2022

Confident Cannabis
 All Rights Reserved
 support@confidentcannabis.com
 (866) 506-5866
 www.confidentcannabis.com



This product has been tested by Infinite Chemical Analysis, LLC using valid testing methodologies and a quality system as required by state law. All LQC samples were performed and met the prescribed acceptance criteria in 16 CCR section 15730, pursuant to 16 CCR section 15726(e)(13). Values reported relate only to the product tested. Infinite Chemical Analysis, LLC makes no claims as to the efficacy, safety or other risks associated with any detected or non-detected levels of any compounds reported herein. This Certificate shall not be reproduced except in full, without the written approval of Infinite Chemical Analysis, LLC.



Certificate of Analysis

QA SAMPLE - INFORMATIONAL ONLY

2 of 3

ICAL ID: 20220216-045
Sample: CA220216-018-055
CBD Broad Spectrum Dropper, 500mg, Mint, w/
MCT Oil, 30ml - Synephrine
Strain: CBD Broad Spectrum Dropper, 500mg,
Mint, w/ MCT Oil, 30ml - Synephrine
Category: Ingestible

New Phase Blends, LLC
Lic. #
None
West Palm Beach, FL 33401
New Phase Blends, LLC
Lic. #
New Phase Blends, LLC West Palm Beach, FL

Batch#: 10F22
Batch Size Collected:
Total Batch Size:
Collected: 02/21/2022; Received: 02/21/2022
Completed: 02/21/2022

Residual Solvent Analysis

Category 1	LOQ	LOD	Limit	Status	Category 2	LOQ	LOD	Limit	Status	Category 2	LOQ	LOD	Limit	Status
------------	-----	-----	-------	--------	------------	-----	-----	-------	--------	------------	-----	-----	-------	--------

NR= Not Reported (no analysis was performed), ND= Not Detected (the concentration is less then the Limit of Detection (LOD)). Analytical instrumentation used: HS-GC-MS; samples analyzed according to SOP RS-INST-003.

Heavy Metal Screening

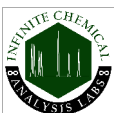
	LOQ	LOD	Limit	Status
--	-----	-----	-------	--------

NR= Not Reported (no analysis was performed), ND= Not Detected (the concentration is less then the Limit of Detection (LOD)). Analytical instrumentation used: ICP-MS; samples analyzed according to SOP HM-INST-003.

Microbiological Screening

	Limit	Result	Status
--	-------	--------	--------

ND=Not Detected. Analytical instrumentation used:qPCR; samples analyzed according to SOP MICRO-INST-001.



Infinite Chemical Analysis Labs
8380 Miramar Mall #102
San Diego, CA
(858) 623-2740
www.infiniteCAL.com
Lic# C8-0000019-LIC

Josh M Swider

Josh Swider
Lab Director, Managing Partner
02/21/2022

Confident Cannabis
All Rights Reserved
support@confidentcannabis.com
(866) 506-5866
www.confidentcannabis.com



This product has been tested by Infinite Chemical Analysis, LLC using valid testing methodologies and a quality system as required by state law. All LQC samples were performed and met the prescribed acceptance criteria in 16 CCR section 15730, pursuant to 16 CCR section 15726(e)(13). Values reported relate only to the product tested. Infinite Chemical Analysis, LLC makes no claims as to the efficacy, safety or other risks associated with any detected or non-detected levels of any compounds reported herein. This Certificate shall not be reproduced except in full, without the written approval of Infinite Chemical Analysis, LLC.



Certificate of Analysis

QA SAMPLE - INFORMATIONAL ONLY

3 of 3

ICAL ID: 20220216-045
Sample: CA220216-018-055
CBD Broad Spectrum Dropper, 500mg, Mint, w/
MCT Oil, 30ml - Synephrine
Strain: CBD Broad Spectrum Dropper, 500mg,
Mint, w/ MCT Oil, 30ml - Synephrine
Category: Ingestible

New Phase Blends, LLC
Lic. #
None
West Palm Beach, FL 33401
New Phase Blends, LLC
Lic. #
New Phase Blends, LLC West Palm Beach, FL

Batch#: 10F22
Batch Size Collected:
Total Batch Size:
Collected: 02/21/2022; Received: 02/21/2022
Completed: 02/21/2022

Chemical Residue Screening

Category 1	LOQ	LOD	Status	Mycotoxins	LOQ	LOD	Limit	Status
------------	-----	-----	--------	------------	-----	-----	-------	--------

Category 2	LOQ	LOD	Limit	Status	Category 2	LOQ	LOD	Limit	Status
------------	-----	-----	-------	--------	------------	-----	-----	-------	--------

Other Analyte(s):

NR= Not Reported (no analysis was performed), ND= Not Detected (the concentration is less than the Limit of Detection (LOD)). Analytical instrumentation used: LC-MS-MS & GC-MS-MS; samples analyzed according to SOPs PESTMYCO-LC-INST-004 and PEST-GC-INST-003.



Infinite Chemical Analysis Labs
8380 Miramar Mall #102
San Diego, CA
(858) 623-2740
www.infiniteCAL.com
Lic# C8-0000019-LIC

Josh M Swider

Josh Swider
Lab Director, Managing Partner
02/21/2022

Confident Cannabis
All Rights Reserved
support@confidentcannabis.com
(866) 506-5866
www.confidentcannabis.com



This product has been tested by Infinite Chemical Analysis, LLC using valid testing methodologies and a quality system as required by state law. All LQC samples were performed and met the prescribed acceptance criteria in 16 CCR section 15730, pursuant to 16 CCR section 15726(e)(13). Values reported relate only to the product tested. Infinite Chemical Analysis, LLC makes no claims as to the efficacy, safety or other risks associated with any detected or non-detected levels of any compounds reported herein. This Certificate shall not be reproduced except in full, without the written approval of Infinite Chemical Analysis, LLC.